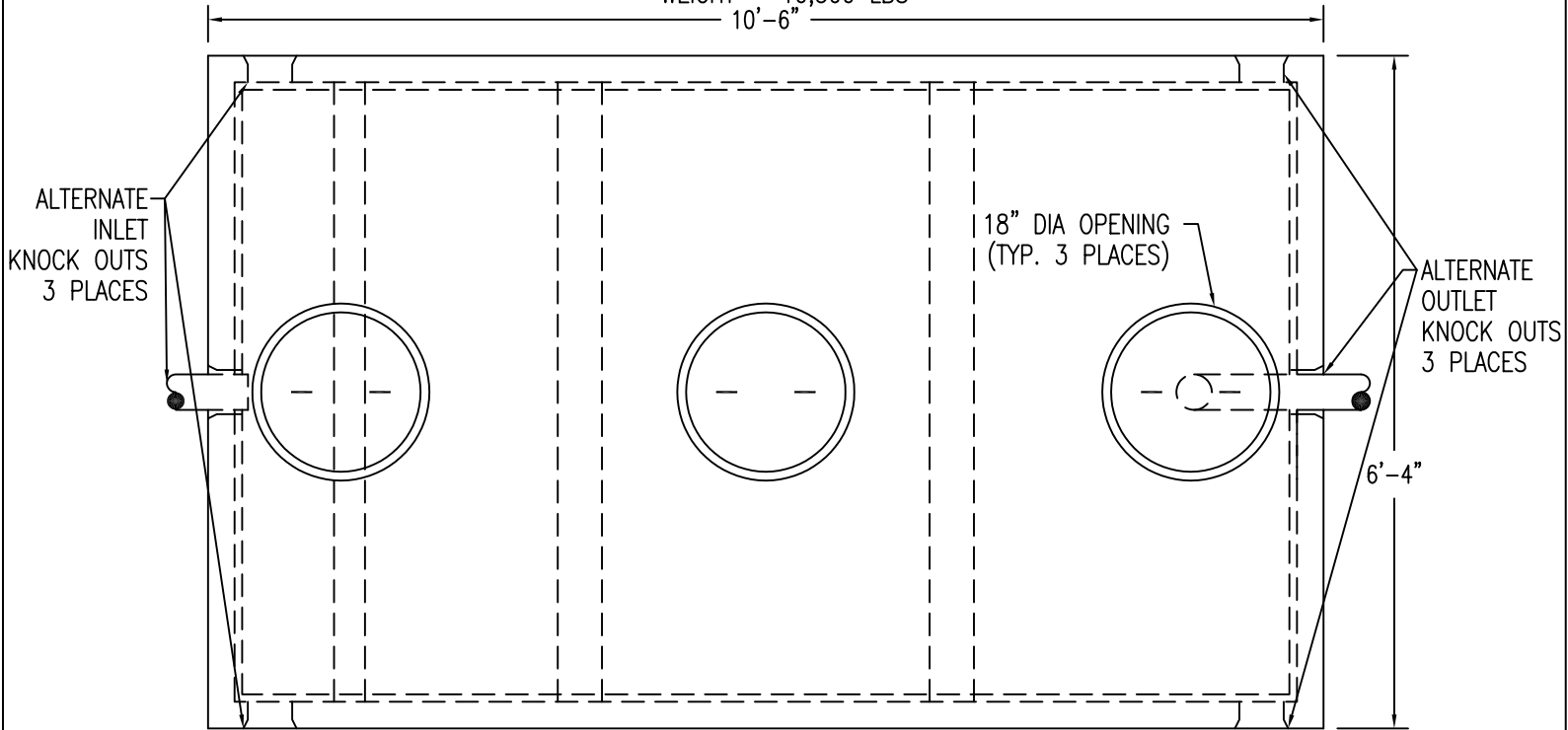
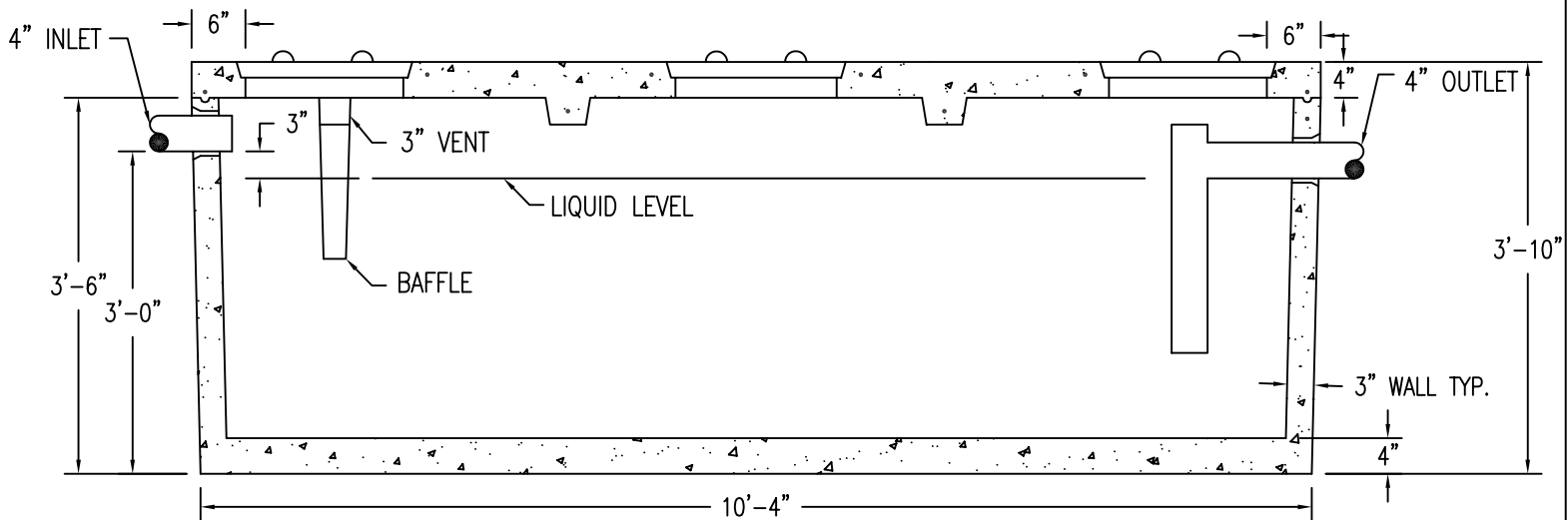


1,000 GALLON LOW BOY ONE PEICE

ITEM #A-10030HD
 WEIGHT - 10,500 LBS
 10'-6"



TOP VIEW



SECTION

DESIGN NOTES:

- 1 - CONCRETE 4000 PSI AT 28 DAYS.
- 2 - TANKS REINFORCED WITH STRUCTURAL FIBERS & REBAR.
- 3 - TOPS REINFORCED WITH 1/2" REBAR ON 6" CENTERS EACH WAY.
- 4 - KEYED JOINTS SEALED WITH BUTYL ROPE SEALANT.