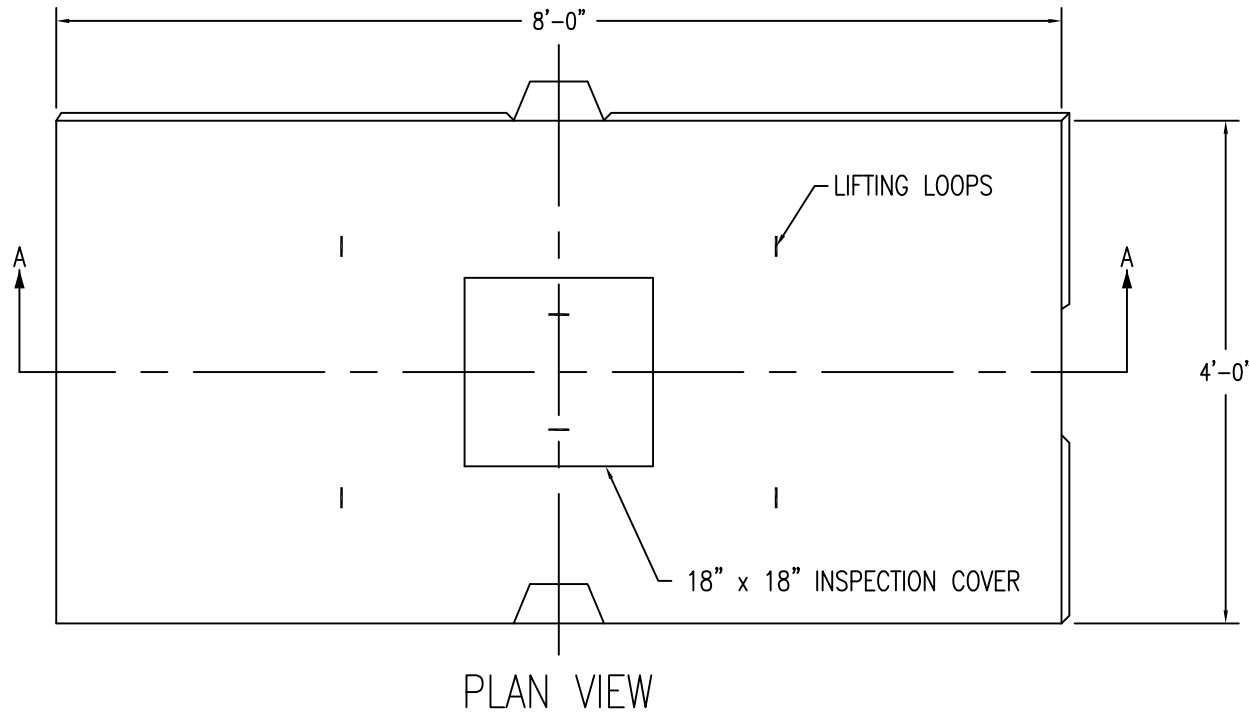


# FLODIFFUSOR LEACHING CHAMBERS

ITEM #A-5  
WEIGHT - 1900 LBS



## DESIGN NOTES:

- 1 - CONCRETE 4000 PSI AT 28 DAYS.
- 2 - DESIGN LOAD 600 PFS. (H-20  
LOADING AVAILABLE ITEM #A-5HD)
- 3 - DISTRIBUTION LINE RUNNING WIDTH  
OF CHAMBER.

