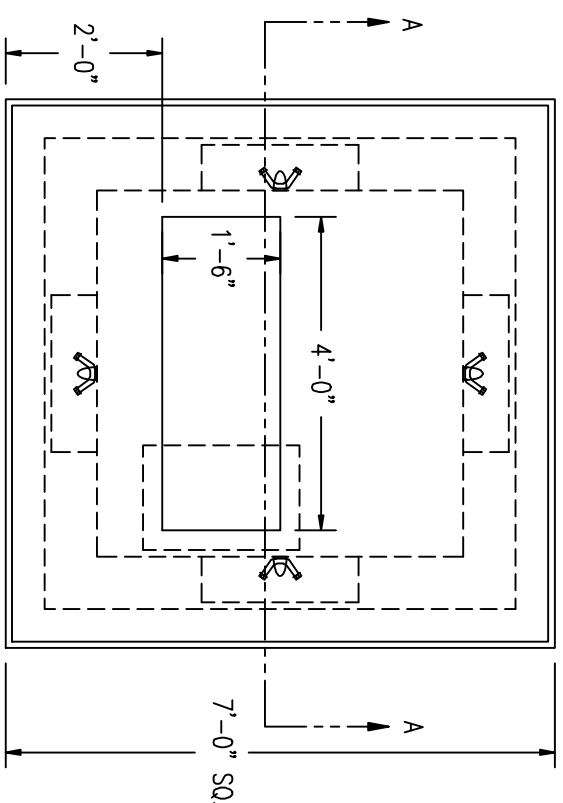


7' X 7' THREE PHASE TRANSFORMER PAD (75 - 500 KVA)

ITEM #B-2
WEIGHT - TOP: 5,860 LBS BASE: 8,533 LBS

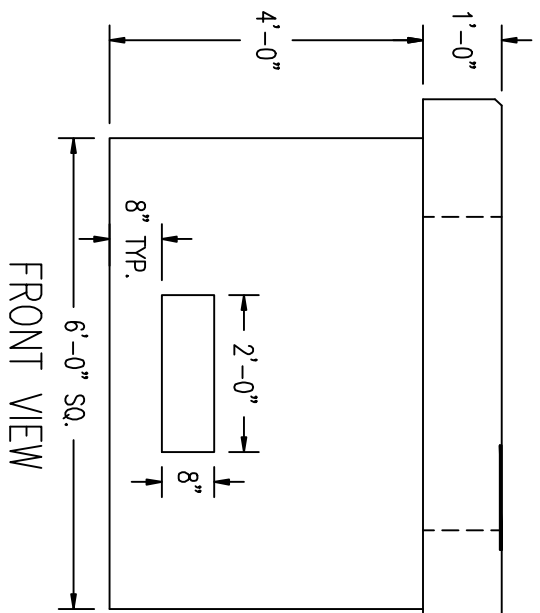
DESIGN NOTES:

- 1 - CONCRETE 4000 PSI AT 28 DAYS.
- 2 - REINFORCING PER CMP SPEC.
- 3 - DUCT OPENINGS SHOWN ARE TYPICAL AND CAN BE MODIFIED PER REQUEST.
- 4 - CENTRAL MAINE POWER COMPANY SPECIFICATION.

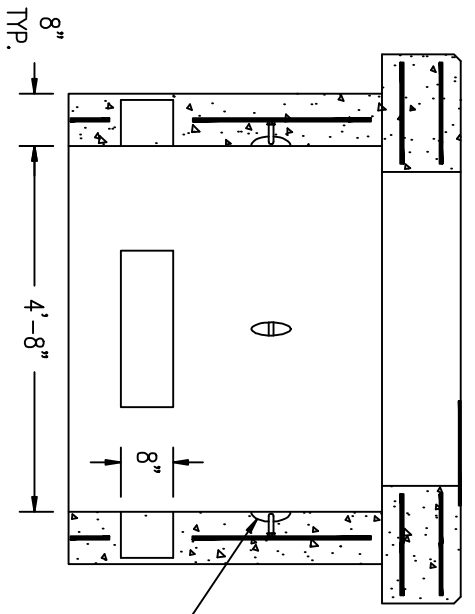


16" X 24" X 1/4"
GALVANIZED STEEL PLATE
(BY OTHERS)

1" CHAMFER



FRONT VIEW



SECTION A-A

5/8" x 8" RECESSED
PULLING ANCHOR
(TYP. OF FOUR)