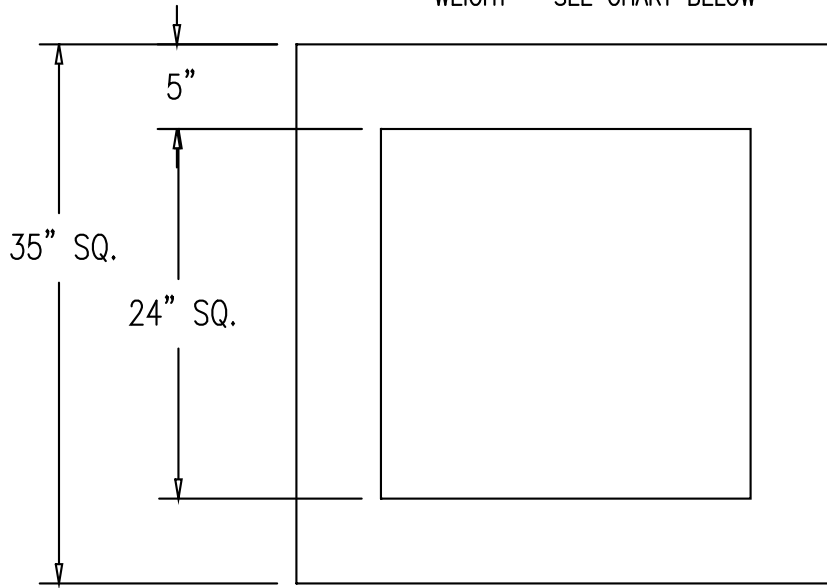
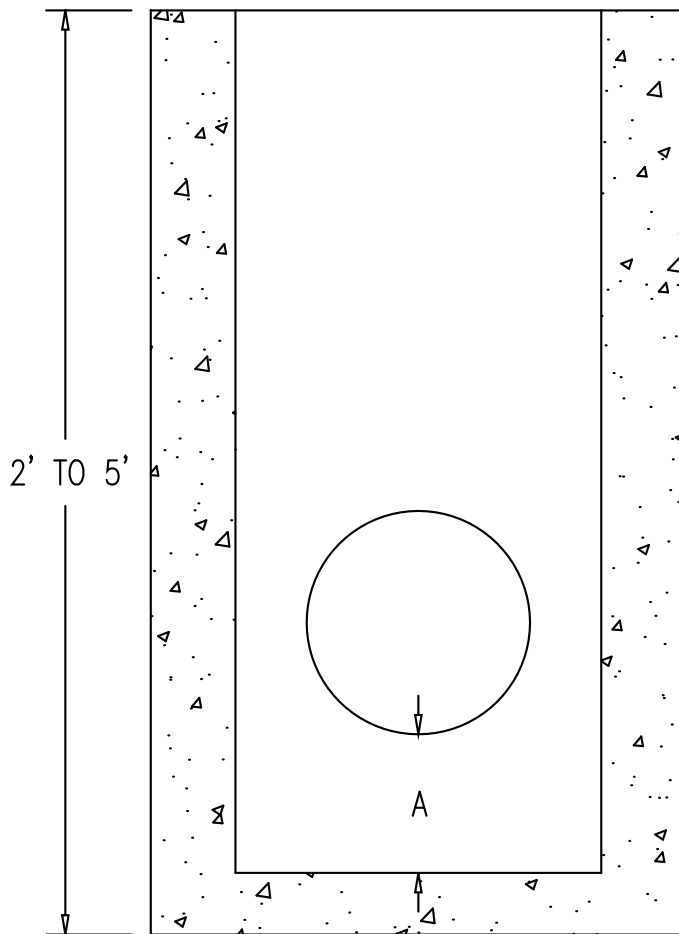


# 24" SQUARE CATCH BASIN (TYPE "F")

ITEM #C-1  
WEIGHT - SEE CHART BELOW



PLAN



SECTION

DESIGN NOTES:

- 1 - FIBER REINFORCED CONCRETE 4000 PCI AT 28 DAYS
- 2 - (A) SIZE & LOCATION OF HOLE(S) AS NEEDED.
- 3 - FLEXIBLE WATERTIGHT PIPE BOOTS A.S.T.M. C-923.
- 4 - CATCH BASINS ARE AVAILABLE FROM 2'-0" TO 5'-0" HEIGHTS.
- 5 - 6", 1', & 2' RISERS AVAILABLE.

BASE HEIGHT	WEIGHT (LBS)	RISER HEIGHT	WEIGHT (LBS)
2'	1,752	6"	374
3'	2,500	1'	748
4'	3,248	2'	1,500
5'	4,000		
6'	4,600		