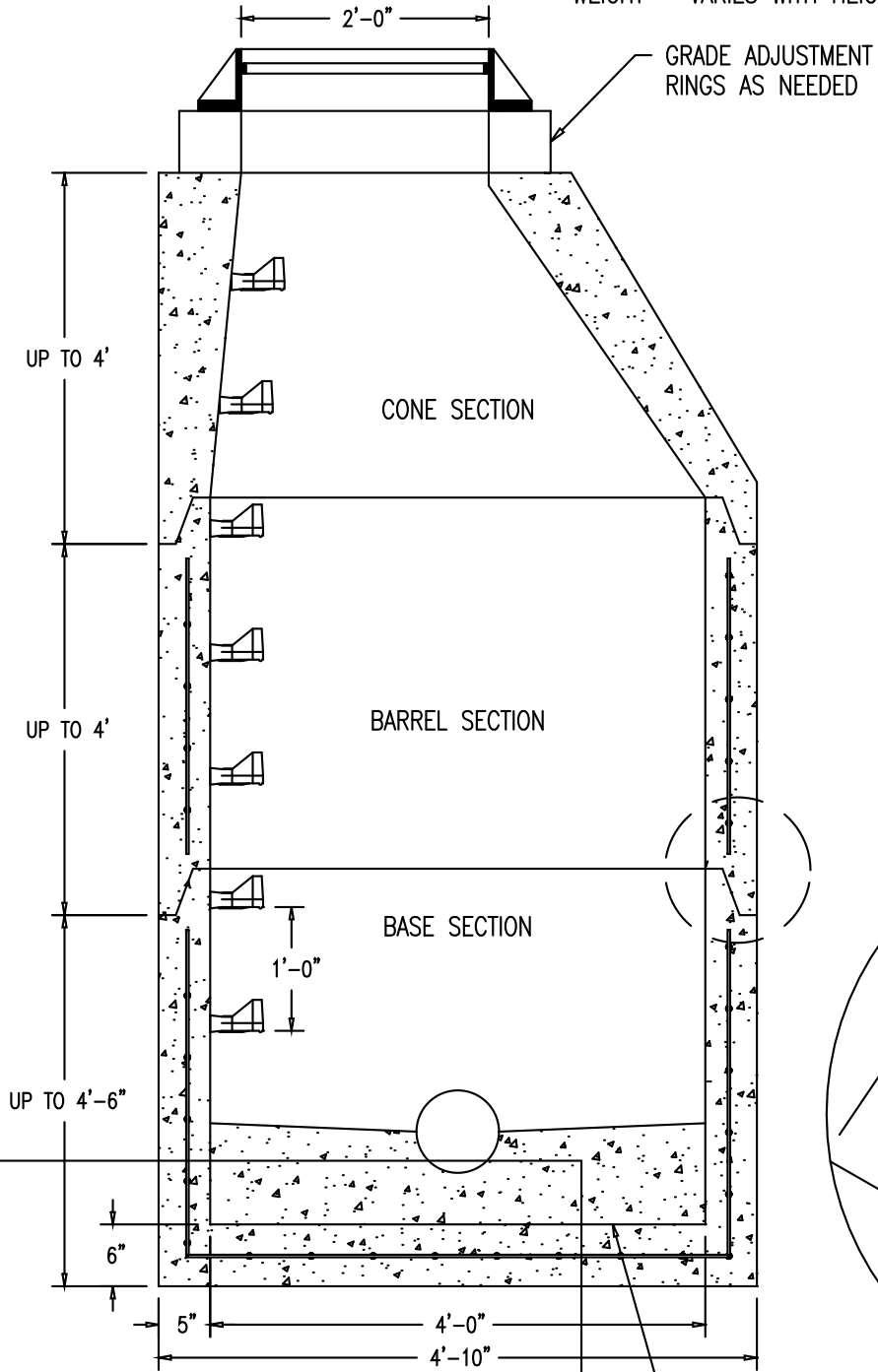


4' DIA SEWER MANHOLES

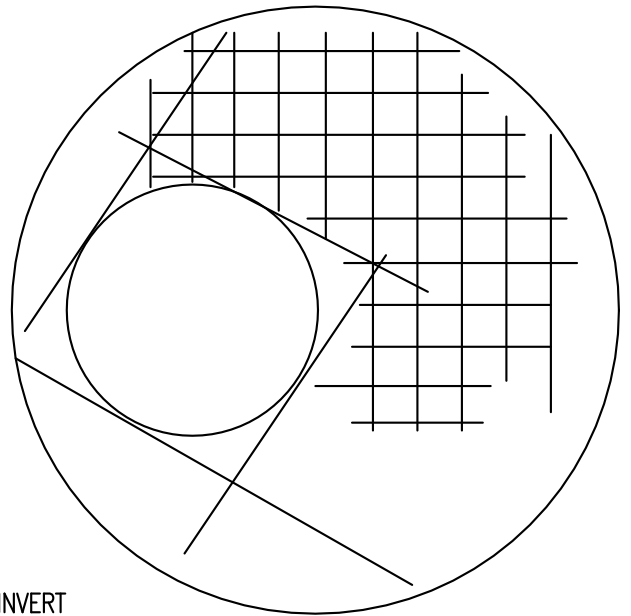
ITEM # C-3

WEIGHT - VARIES WITH HEIGHT

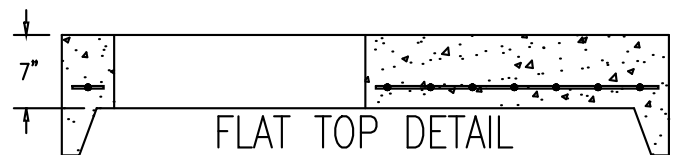
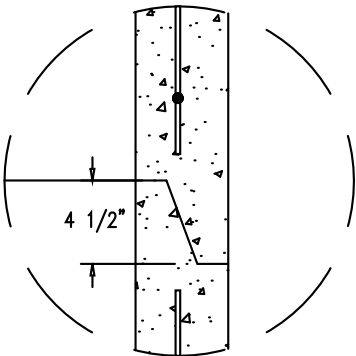


DESIGN NOTES:

- 1 - CONCRETE 4000 PSI AT 28 DAYS.
- 2 - DESIGNED TO CONFORM TO A.S.T.M. C-478.
- 3 - ALL MANHOLE MATERIAL MEETS H-20 LOADING REQUIREMENTS.
- 4 - JOINTS SEALED WITH BUTYL RUBBER JOINT SEALANT. AASHTO M-19
- 5 - STEPS ARE COPOLYMER POLYPROPYLENE PLASTIC WITH 1/2" GRADE 60 STEEL REBAR CONTINUOUS THROUGHOUT STEP. A.S.T.M. 2146-8 AND A-615.
- 6 - DAMP PROOF EXT. COATING.
- 7 - CONE SECTION IS FIBER REINFORCED CONCRETE
- 8 - FLEXIBLE WATERTIGHT PIPE BOOTS A.S.T.M. C-923.



CONCRETE INVERT



FLAT TOP DETAIL
TO BE USED IN PLACE OF
A CONE (WHERE REQUIRED)