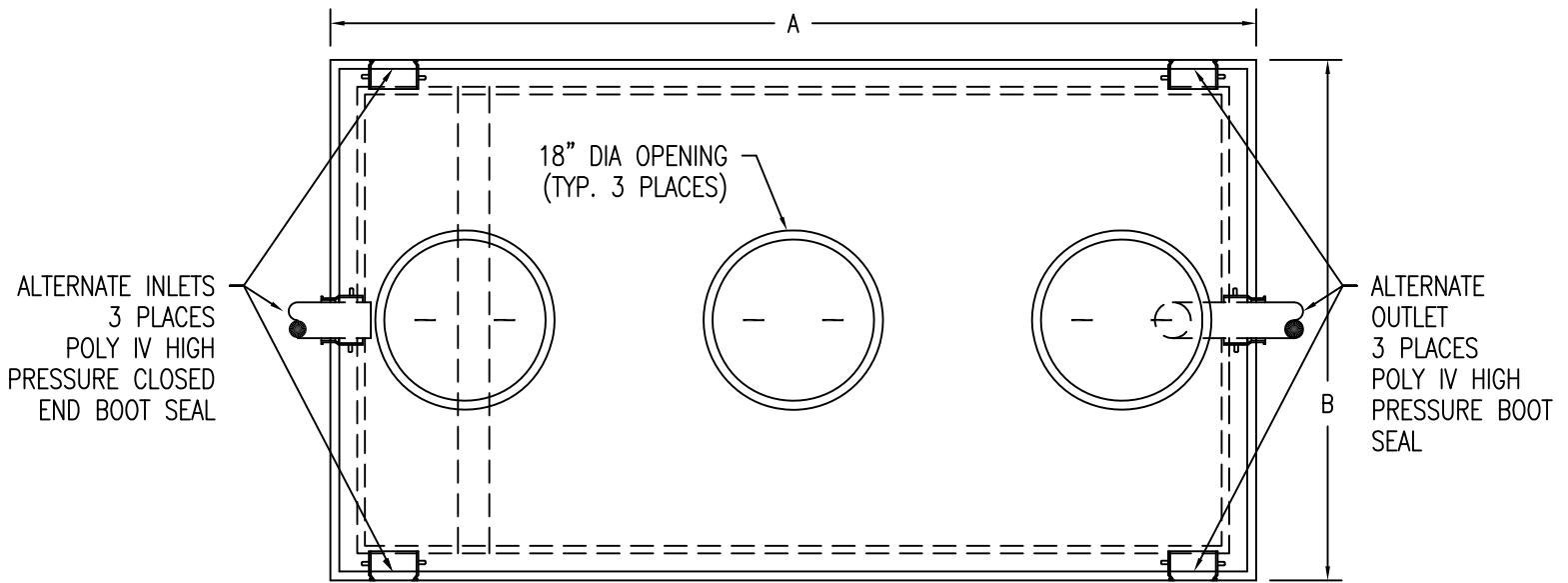
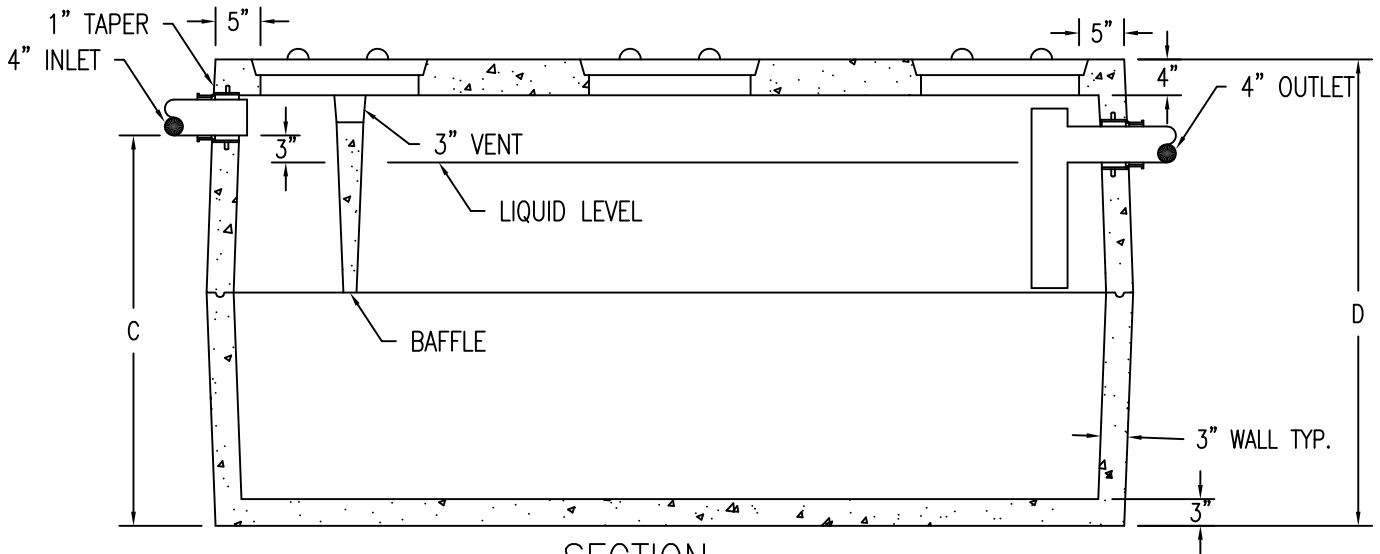


RESIDENTIAL SEPTIC TANKS

ITEM #A-10
WEIGHT - SEE CHART BELOW



TOP VIEW



SECTION

LIQUID CAPACITY (GALLONS)	A	B	C	D	WEIGHT (LBS)	REGULAR ITEM #	HEAVY DUTY ITEM #
750	8'-6"	4'-10"	43"	52"	7,400	A-1001	A-1001HD
1000 REG	8'-6"	4'-10"	55 1/2"	64"	8,100	A-1002	A-1002HD
1000 LB	10'-6"	6'-4"	37"	48"	10,500	A-1003	A-1003HD
1500	10'-6"	6'-4"	55"	64"	11,220	A-1004	A-1004HD
2000	10'-6"	6'-4"	65"	74"	12,250	A-1005	A-1005HD

DESIGN NOTES:

- 1 - CONCRETE 4000 PSI AT 28 DAYS.
- 2 - INLET BAFFLE IS PRECAST AS ONE UNIT WITH THE TOP SECTION OF THE SEPTIC TANK.
- 3 - KEYED JOINTS SEALED WITH ASPHALT SEALANT.
- 4 - REINFORCED WITH STRUX 90/40 BY WR GRACE AT 5 LBS/CY.
- 5 - HEAVY DUTY SEPTIC TANK TOPS REINFORCED WITH 1/2" REBAR ON 6" CENTERS EACH WAY.
- 6 - TUF-TITE EF-4 OUTLET FILTER INCLUDED.

PRECAST CONCRETE PRODUCTS OF MAINE, INC. PHONE (207) 729-1628 FAX (207) 729-8710

www.PrecastOfMaine.com