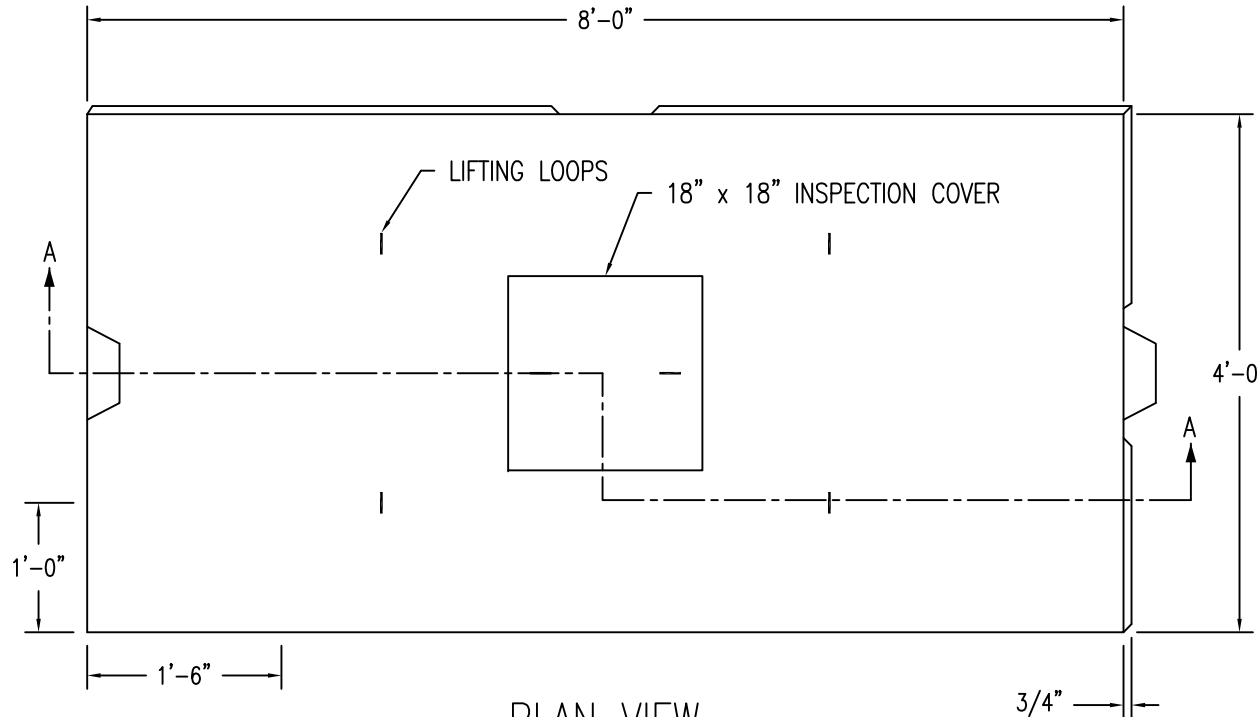


FLODIFFUSOR LEACHING CHAMBERS

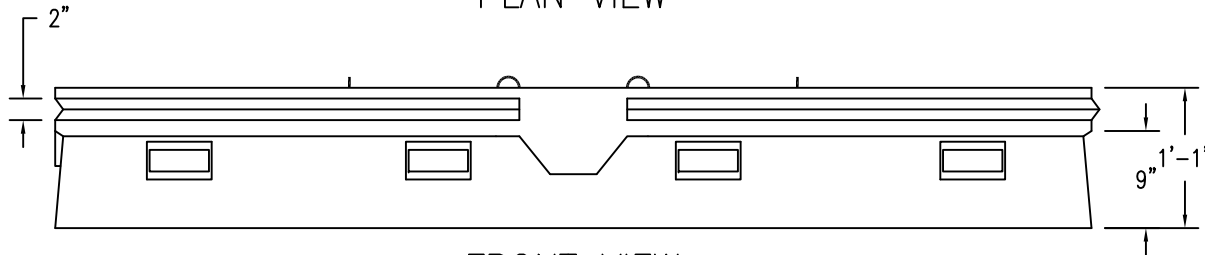
ITEM #A-6
WEIGHT - 1900 LBS



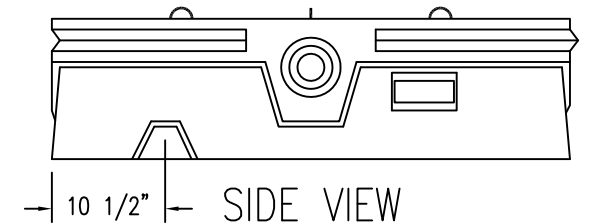
PLAN VIEW

DESIGN NOTES:

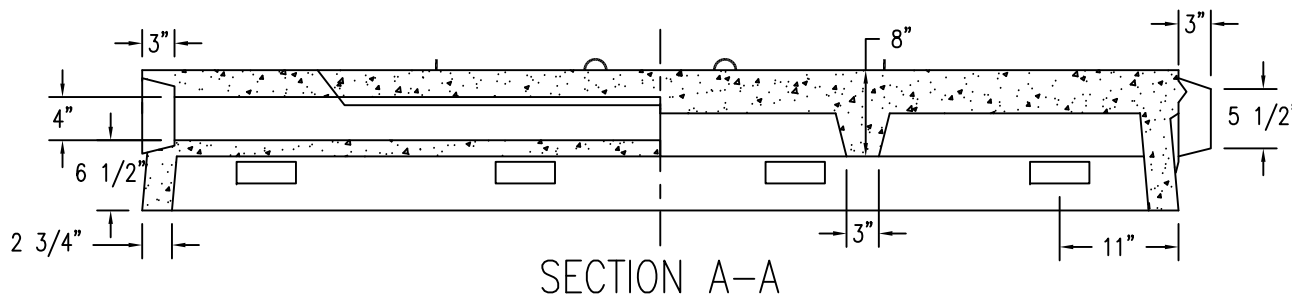
- 1 - CONCRETE 4000 PSI AT 28 DAYS.
- 2 - DESIGN LOAD 600 PFS. (H-20 LOADING AVAILABLE ITEM #A-6HD)
- 3 - DISTRIBUTION LINE RUNNING LENGTH OF CHAMBER.



FRONT VIEW



SIDE VIEW



SECTION A-A