

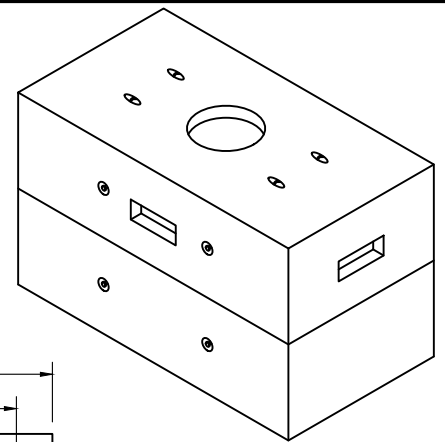
APPROXIMATE WEIGHT:

16,200 LBS (4.05 CY) TOP

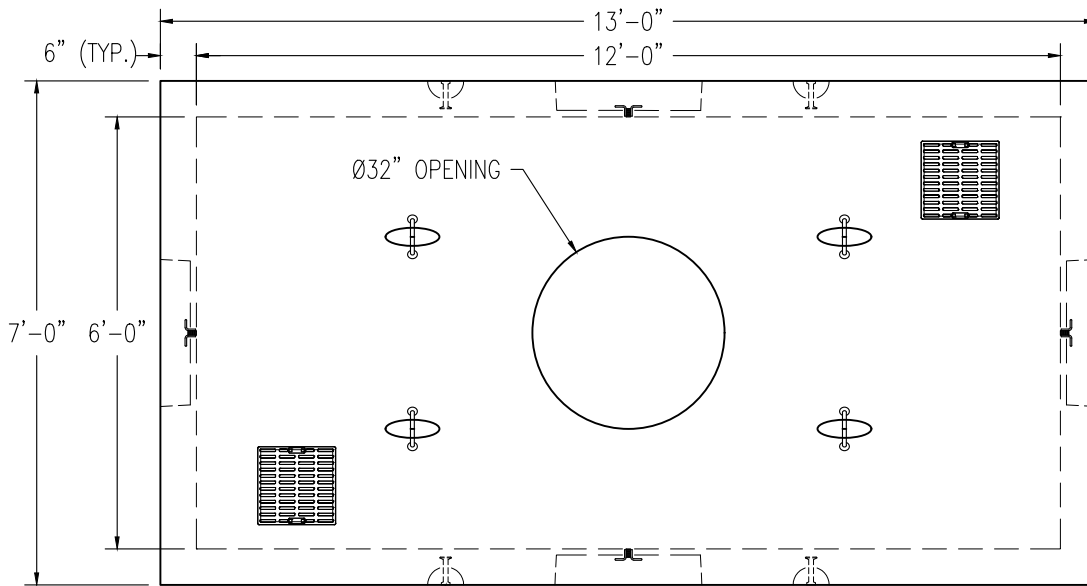
16,600 LBS (4.15 CY) BOTTOM

DESIGN NOTES

1. CONCRETE TO BE 5000 PSI @ 28 DAYS.
2. REINFORCING TO BE GRADE 60, BLACK.
3. VAULT TO BE RATED FOR H-20 LOADING.
4. JOINTS SEALED WITH BUTYL RUBBER SEALANT.

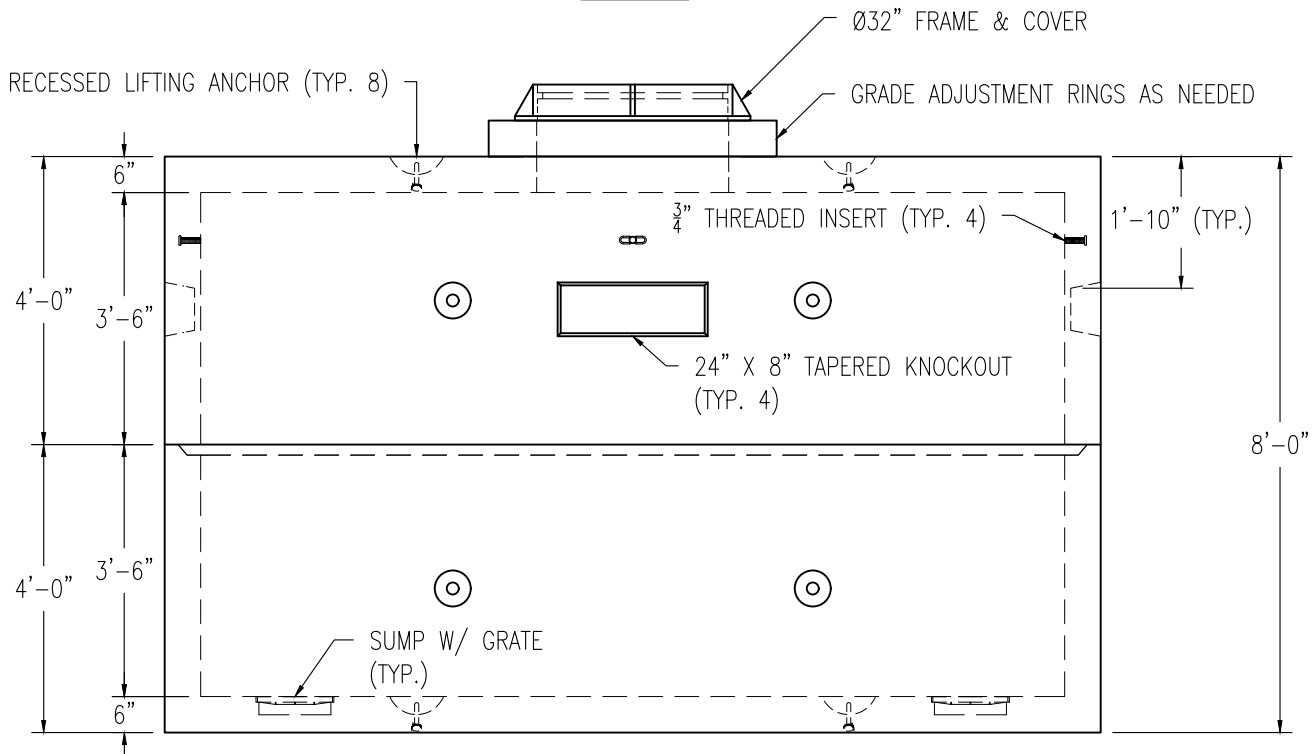


ISO VIEW



RECESSED LIFT PIN (TYP.)

PLAN VIEW



FRONT VIEW

PRODUCT: 6' X 12' UTILITY MANHOLE

ITEM NUMBER: UB612

DRAWN BY:DTM

SCALE: 3/8" = 1'-0"

DATE:3/16/22



**PRECAST  
OF MAINE**

139 MAIN STREET, P.O. BOX 307

TOPSHAM, ME 04086

(207) 729-1628

WWW.PRECASTOFMAINE.COM