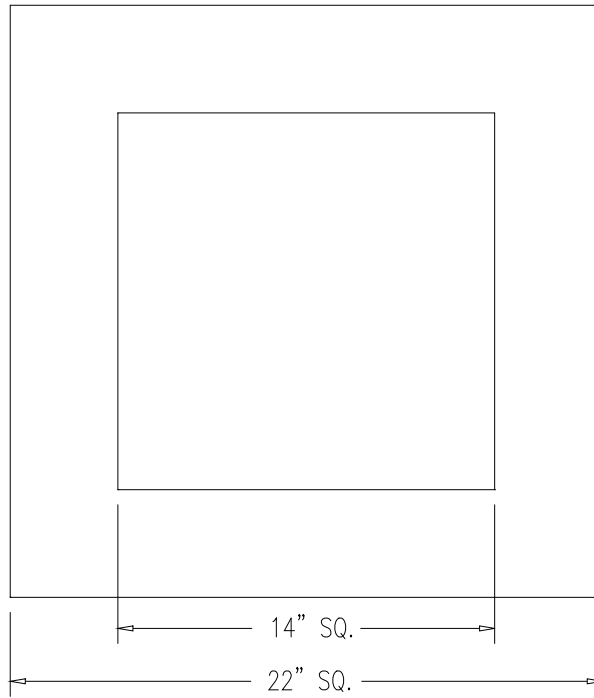


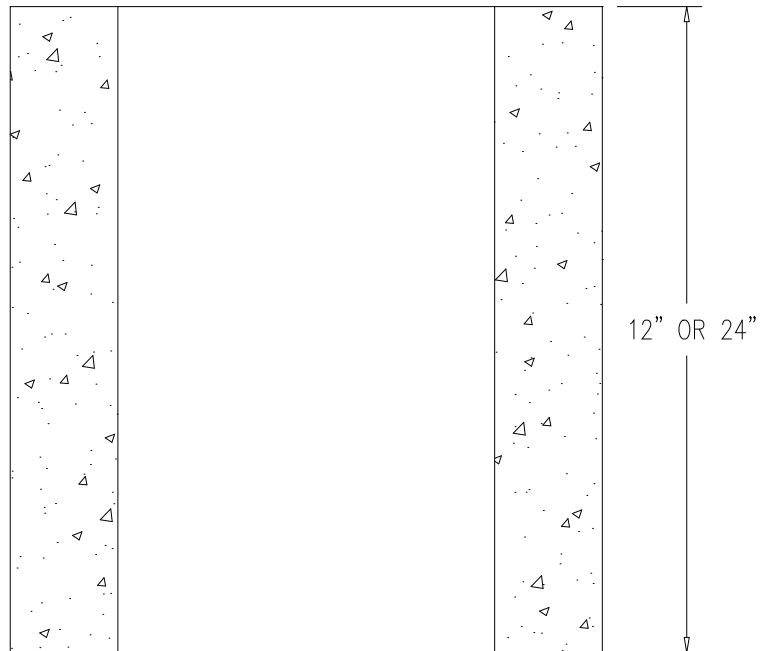
ELECTRIC HAND HOLE

ITEM #B-10

WEIGHT - SEE CHART BELOW



TOP VIEW



SECTION

DESIGN NOTES:

- 1 - CONCRETE 4000 PSI AT 28 DAYS.
- 2 - FRAMES AND COVERS ARE AVAILABLE UPON REQUEST.

HEIGHT	WEIGHT	ITEM #
12"	300 LBS	B-1001
24"	600 LBS	B-1002