

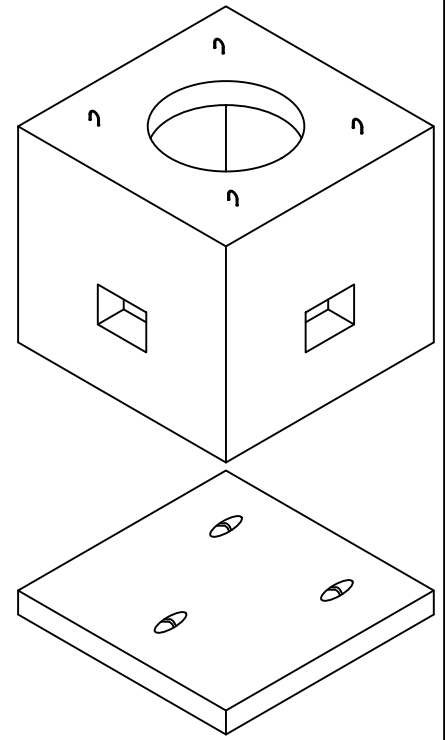
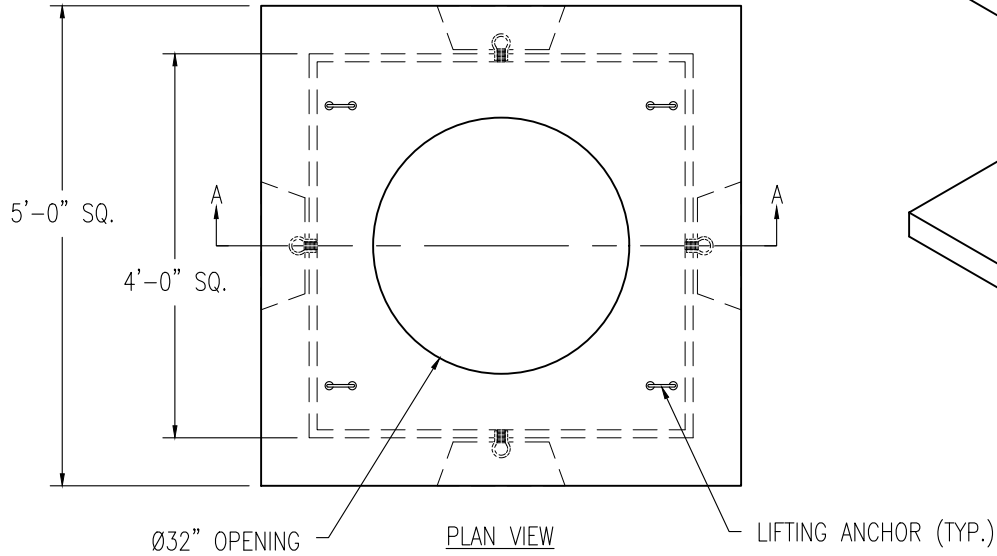
APPROXIMATE WEIGHT:

7,400 LBS (1.85 CY) SPLICE BOX

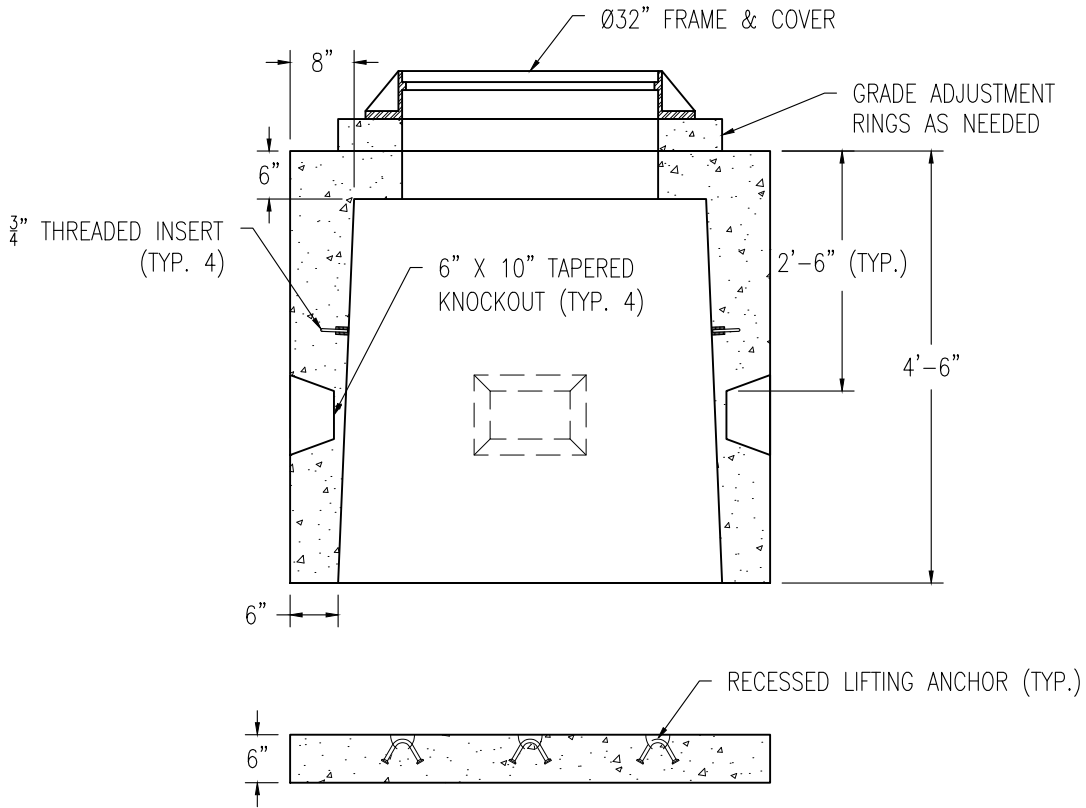
1,850 LBS (0.46 CY) BASE SLAB

DESIGN NOTES:

1. CONCRETE TO BE 5,000 PSI @ 28 DAYS.
2. REINFORCING TO BE GRADE 60, BLACK.
3. BOX TO BE RATED FOR H-20 LOADING.
4. BASE SLAB OPTIONAL.



ISO VIEW



SECTION A-A

PRODUCT: 4' X 4' SPLICE BOX

ITEM NUMBER: SB4X4, SB4X4BASE

SCALE: 1/2" = 1'-0"

DRAWN BY: DTM

DATE: 3/7/22



**PRECAST  
OF MAINE**

139 MAIN STREET, P.O. BOX 307

TOPSHAM, ME 04086

(207) 729-1628

WWW.PRECASTOFMAINE.COM